

MiScope™

The digital microscope that fits in the palm of your hand

The MiScope (pronounced My-Scope) combines a digital movie camera, precision optics and LED lighting in a microscope that fits in the palm of your hand. 40 - 140X magnification lets you zoom in on the fine details of insects, textiles, electronics or anything else too small to see. Place the MiScope over the object, and comfortably view the image on your computer screen, instead of straining to look into a tiny eyepiece. Capture images or movies, easily add labels, make measurements and even draw right on the live video image.

The MiScope connects to your computer's USB port where it's always ready to use. Grab a laptop and take the MiScope anywhere. Use it to show your products to a customer, inspect a valuable collectable right in the store, or take it into the backyard and get a closer look at the insects who share our world.

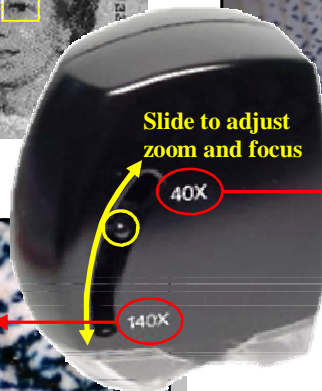


Features

- View live images on the computer screen (or use a computer projector for large groups)
- 40 — 140x magnification
- Completely portable with a laptop computer
- Save still images, movies and time lapse
- Labels, markers, time stamps, measurement
- Draw directly on the live image



British five pound note



Applications

- Education (Biology, Life Sciences, Geology)
- Backyard Science (Bugs, Plants, Fossils)
- Collectors (Stamps, Coins, Cards, Artwork)
- Forensics (Crime Scene, Documents)
- Manufacturing (Electronics, Surface Finish, Textiles)
- Graphic Arts and Printing
- Entomology

Zarbeco, L.L.C.
creative imaging solutions

12 Ridge Road, Randolph, NJ 07869 USA
Phone: 973-989-2673 Fax: 973-989-2674
sales@zarbeco.com www.zarbeco.com

MiScope™ — A new way to see the world

Sample Images



Mealy worm



Watch mechanism



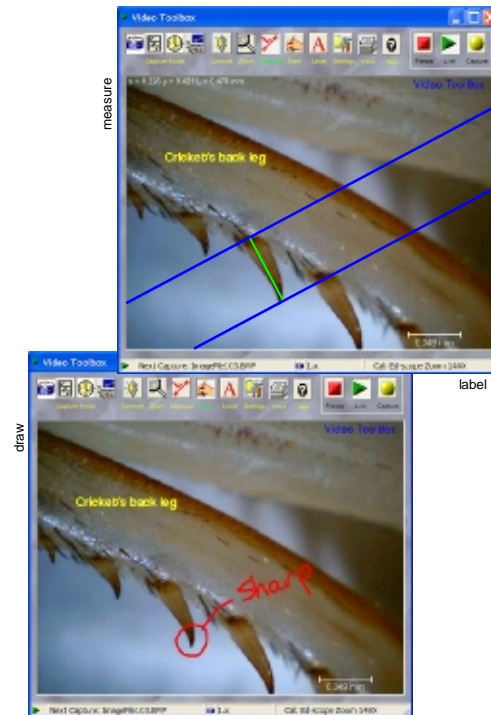
Fabric sample



Official document

Software Features

- Display live video
- Capture still images, movies and time lapse sequences.
- Interactively adjust camera brightness, contrast and color.
- Live digital zoom up to 4x.
- Resizable image window — up to full screen
- Measure on the live image using multiple measurement tools.
- Calibrate for different magnifications — store and recall up to 8 different calibrations.
- Add labels and markers over the live image. Drag to move.
- Draw freehand on the live image
- Place a time stamp anywhere on the image.
- Capture images directly into your favorite photo editor for further enhancement.



MiScope Specifications

- I Image Sensor: 1/3" CMOS
- I Pixels: 640 x 480
- I Power: USB port
- I Light Source: super-bright LEDs
- I Field of View
 - @40X: 7.5 x 10 mm
 - @140X: 1.8 x 2.5 mm
- I Resolution: 4 microns

Computer Requirements

Pentium III 500MHz or greater,
Windows 2000/XP, DirectX 8.1 or greater, Internet
Explorer 5.0 or greater, USB port.

Accessories

- MiSC-HC Watertight hard case for MiScope
- VTB-GPS GPS option with software and antenna