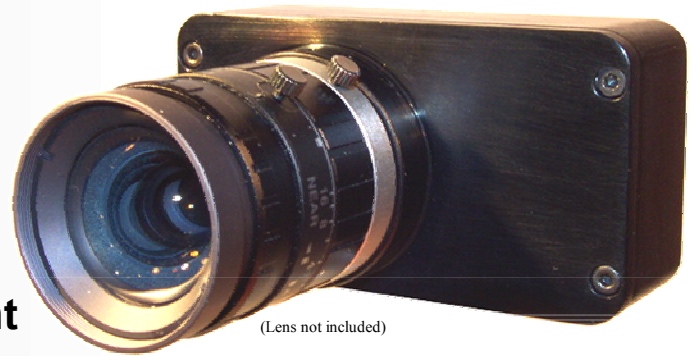


3.0 Megapixel USB 2.0 Camera

Model: ZC-305

- 2048 x 1536 pixels
- USB powered
- Connects directly to laptop or desktop computers with USB 2.0
- DirectShow[®] and TWAIN[™] compliant
- Includes software to capture still images and movies, with labeling, annotation and measurement.



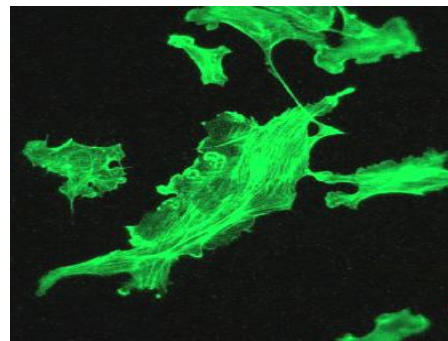
An ultra-compact, scientific quality camera for machine vision or microscopy, the ZC-305 is fully DirectShow[®] and TWAIN[™] compliant so it is compatible with the hundreds of programs which already support these popular standards.

The 2048 x 1536 pixel array updates at 6 frames/sec. (20 frames/sec. at 1024 x 768 pixels.) A single cable simplifies connecting the camera to any desktop or laptop computer with a USB 2.0 port. Since the ZC-305 is fully powered from the USB 2.0 port, it is the perfect choice for mobile imaging applications.

The ZC-305 camera includes Video ToolBox software, which provides full control over the camera, an easy-to-use interface for image capture, and advanced labeling, annotation and measurement features. Additional software provides advanced control of the exposure, including automatic or manual control of gain and exposure, white balance, and on-chip integration for low-light imaging.

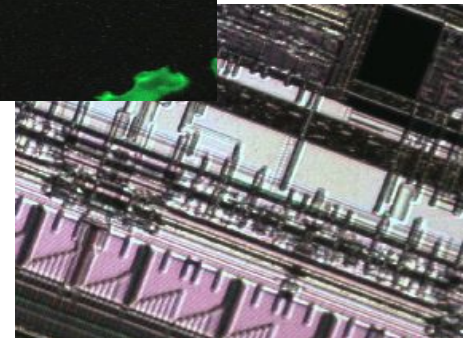
Applications:

- Microscopy including Brightfield, Darkfield, DIC and Fluorescence
- Video Inspection and Documentation
- Surveillance and Security
- Mobile Imaging
- Photo ID Systems
- Telemedicine
- Video Conferencing and Webcasting



Fluorescence microscopy

Video microscopy



Specifications:

Sensor Type:	CMOS
Sensor Size:	6.6 mm x 5.0 mm (1/2" type)
Pixel Size:	3.2 μ x 3.2 μ
Array Size:	2048 x 1536
Fixed Pattern Noise:	< 0.03%
S/N Ratio:	46 dB
Min. Illumination:	0.028 lux (with IR filter removed)
Pixel Clock:	24 megapixels/second
Bits per Pixel:	8 (per color component)
Frame Rate:	6 (max. full frame)
Exposure Time:	66 μ s to >9 sec.
Shutter:	rolling, progressive scan
Gain:	manual or automatic
Lens Mount:	C-mount with adjustable spacing
Camera Housing:	Aluminum
Camera Body Size:	36 (h) x 66 (w) x 21 (d) mm
Camera Weight:	90 g (w/out lens)
Mounting:	1/4 – 20 threaded tripod socket

Computer Requirements:

- Windows 2000/XP
- Free USB 2.0 Port
- DirectX 8.1 or greater
- Pentium III 1.5 GHz or faster (P4, 2.0+ GHz recommended)
- 256 MB of Free Memory (512+ MB recommended)
- Video card with 32+ MB of video RAM, minimum 1024 x 768 resolution at 16-bit (65,000 colors)

Zarbeco, U.C.C.
creative imaging solutions

12 Ridge Road, Randolph, NJ 07869 USA
Phone: 973-989-2673 Fax: 973-989-2674
sales@zarbeco.com www.zarbeco.com