

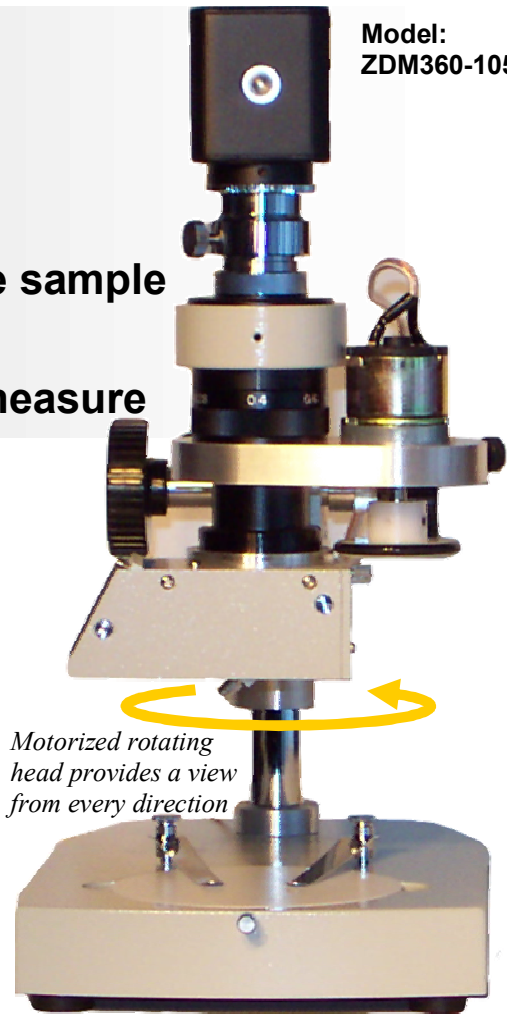
# ZDM-360 Panoramic Digital Video Microscope

Model:  
ZDM360-105-40-M

- View straight down or at an angle
- Rotate the view 360° without moving the sample
- High-resolution 1.3 megapixel camera
- Software to capture, record, annotate, measure

The ZDM-360 Panoramic Digital Video Microscope adds a new dimension to portable inspection. View the sample from above, or switch to an angled view — up to 45 degrees from any direction. The variable speed motor drives the viewing head to produce a 360° panoramic view (which can be recorded) for more complete inspection and documentation. The 1.3 megapixel color camera provides four times the resolution of a standard video camera with excellent color reproduction and high sensitivity over a wide range of magnifications. The standard zoom lens provides a 9 — 65x magnification range (other magnification ranges available). A 150 watt halogen lamp with dual fiber bundles provides ample light to completely illuminate the sample from all directions.

The included Video ToolBox software provides an easy-to-use interface for image and movie capture, advanced labeling, annotation and measurement. The camera also includes DirectShow and TWAIN drivers so it is compatible with most available imaging programs and databases.



## Specifications: ZDM-360 Panoramic Microscope

### Optical

- Magnification: 9 — 65x (other ranges available)
- Field of View: 0.90" x 0.67" at 9x  
0.14" x 0.10" at 65x
- Viewing Angle: 0 — 45°
- Standoff: 3.75" to lens (rotary head removed)

### Camera

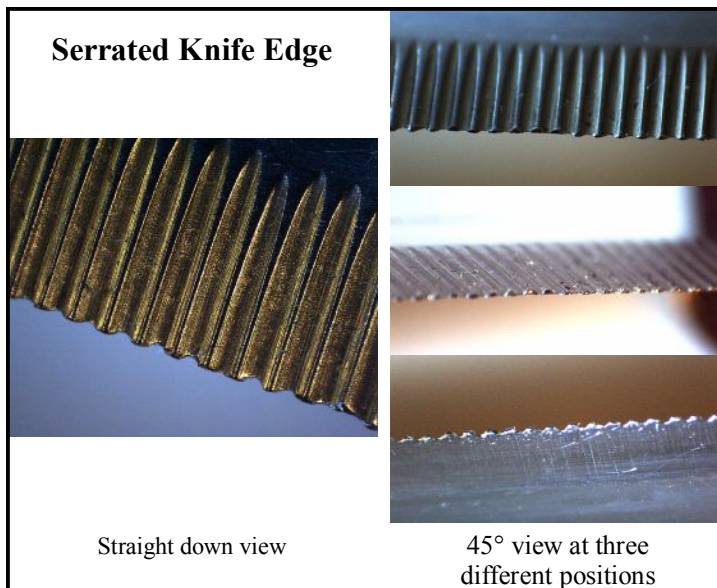
- Array Size: 1280 x 1024 (1.3 megapixels)
- S/N Ratio: 54 dB
- Min. Illumination: 0.028 lux
- Frame Rate: 14.33/sec. (1280 x 1024)  
30/sec. (640 x 480)
- Interface: USB 2.0

### Illumination

- Laboratory: 150 W halogen dual gooseneck
- Portable: USB powered LED bar light

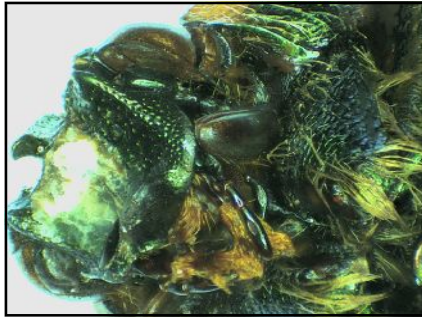
### Software

- Capture Program: Video ToolBox (see back for software features)  
FocusLock (optional)
- Drivers: DirectShow and TWAIN compliant

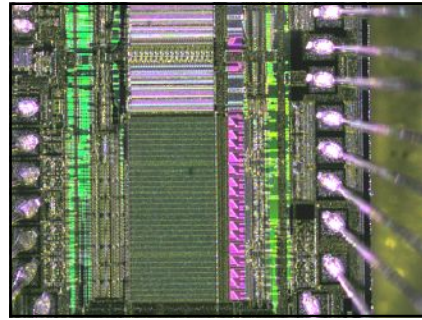


**zarbeco, L.L.C.**  
creative imaging solutions  
12 Ridge Road, Randolph, NJ 07869 USA  
Phone: 973-989-2673 Fax: 973-989-2674  
sales@zarbeco.com www.zarbeco.com

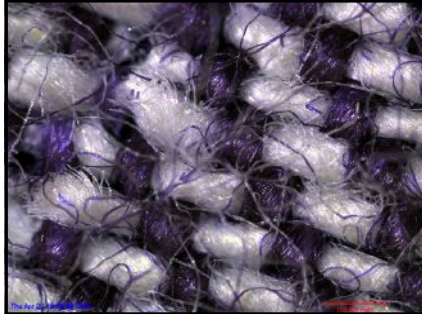
## Sample Images



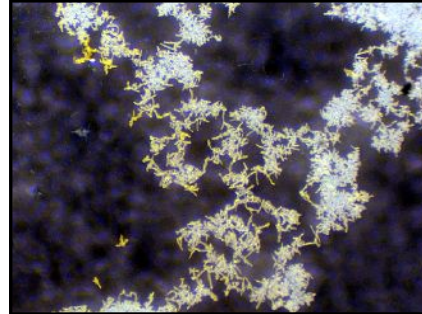
Life Sciences



Microelectronics



Textiles



Forensic Science

## Software Features

- Display live video.
- Capture still images, movies and time lapse sequences.
- Interactively adjust camera brightness, contrast and color.
- Live digital zoom up to 4x.
- Resizable image window — up to full screen.
- Measure on the live image using multiple measurement tools.
- Calibrate for different magnifications — store and recall up to 8 different calibrations.
- Add labels and markers over the live image. Drag to move.
- Draw freehand on the live image.
- Place a time stamp anywhere on the image.
- Capture images directly into your favorite photo editor for further enhancement.



### FocusLock™ Plugin for Video ToolBox — Depth-of-focus enhancement

FocusLock performs real-time focus enhancement by monitoring the video image and capturing every portion of the image which is in focus. All you do is turn the focus knob; FocusLock monitors the video image and captures the in-focus portions. Finally, FocusLock returns an image which is entirely in focus.



Without FocusLock



With FocusLock

### Computer Requirements:

- Windows 2000/XP
- Free USB 2.0 Port
- DirectX 8.1 or greater
- Pentium III 1.0 GHz or faster (P4, 1.5+ GHz recommended)
- 256 MB of Free Memory (512+ MB recommended)
- Video card with 32 MB of video RAM, minimum 800 x 600 resolution at 16-bit (65,000 colors)

*A computer is required but not included with the standard system.*